

PMI APPLICATION IN NX CAD DESIGN

ASML provides chipmakers with hardware, software and services to mass produce patterns on silicon, ASML's key technology is the lithography system, which brings together high-tech hardware and advanced software to control the chip manufacturing process down to the picometer. Most of the world's top chipmakers use ASML lithography machines. ASML has 19,000 employees worldwide and is headquartered in Veldhoven.

BACKGROUND

Customers of ASML want to have the required installation data well before the ordered machine is delivered. Information about dimensions, connection points for water, gas, vacuum, drainage and electricity. Part of this information is now exchanged on the basis of 2D CAD drawings. These drawings, the so-called *scaled drawings*, no longer meet the requirements set by both ASML and its customers. The engineers also use different CAD systems to make these drawings.

CHALLENGE

ASML was looking for an improvement in the quality, reliability and clarity of the *scaled drawings*. An important factor here is the fact that ASML uses NX as a 3D-CAD application, while drawings in DXF or DWG format have to be delivered to customers.

APPROACH

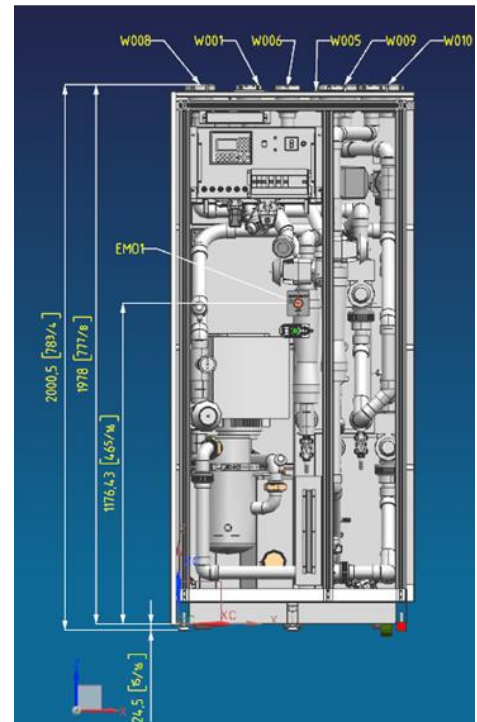
We have chosen to add the installation data to the 3D parts of the *equipment components* in NX. For this PMI is used (PMI = Product and Manufacturing Information). All Scaled Drawings are now created in NX, using the PMI data from the 3D model. The whole concept is based on strict way-of-working agreements on use of dimensions, colors and layers. By using specific developed template parts in NX, engineers are supported to meet these requirements. To create the required neutral CAD formats a special migration tool has been developed.

RESULT

settels savenije PLM services and the staff of ASML have ensured that the intended goals have been achieved. After a feasibility study and a comprehensive test, the new way-of-working has been successfully applied in a pilot project. After that it was introduced as the standard method for equipment components within ASML. The choice for the use of PMI data also offers ASML new possibilities for future improvements in the data exchange process with customers.

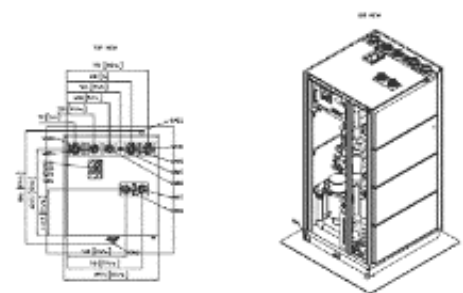
MORE INFORMATION?

Want to know more about our expertise and what we can do for you? Contact Wim Ottenhoff, Managing Consultant settels savenije PLM services, telephone: +31 6 221 58 720



Inbreng settels savenije PLM services

- CAD expertise
- Ontwikkeling werkmethodeken PMI
- CAD data conversie naar DXF, DWG



settels savenije PLM services

Achtseweg Zuid 211
5651 GW Eindhoven
The Netherland
T: +31 (0) 40 8512000
E: info@sttls.nl
W: www.sttls.nl/plm